

FOR LEASE

6861 UPPER AFTON ROAD
WOODBURY, MN 55125



2575 SF

Existing Dental Space Available



Jon Whitcomb Broker / Owner

1950 Northwestern Ave N #101
Stillwater, MN 55082

Cell 651.351.5130
Office 651.351.5005

Email Jon@MetroEastCRE.com
Web www.MetroEastCRE.com

FOR LEASE: Retail / Office Space

6861 Upper Afton Road | Woodbury, MN 55125



Highlights

- ♦ Professional Appearance
- ♦ Medical or Office Space
- ♦ Ample Parking
- ♦ Private Entrance
- ♦ Signage Available
- ♦ Easy Access

Property Information

Building Size:	7600 SF
Space:	2575 SF
Available:	Now
Rental Rate:	\$20 NNN
CAM/TAX:	\$9.11/SF
Parking:	Ample Surface Lot
Year Built:	1982
A/C / Heat:	Indv. Furnace & Central Air



COMMERCIAL REAL ESTATE SERVICES

Jon Whitcomb Broker / Owner

1950 Northwestern Ave N #101
Stillwater, MN 55082

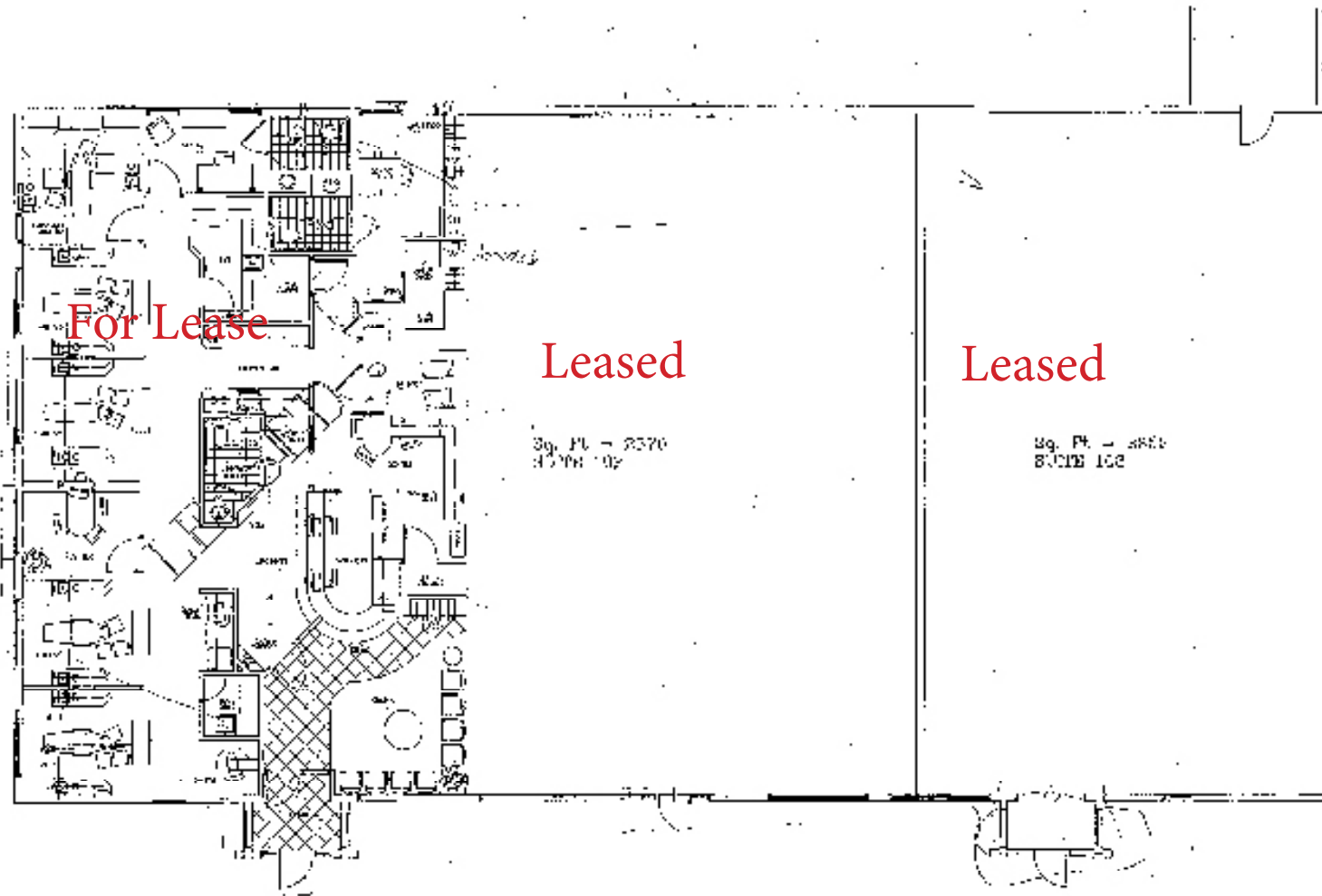
Cell 651.351.5130
Office 651.351.5005

Email Jon@MetroEastCRE.com
Web www.MetroEastCRE.com

The information contained herein has been provided by the property owner or obtained from sources deemed reliable. Although the information is believed to be accurate, it is not guaranteed. The property is subject to price change, prior sale or lease and withdrawal from the market, without notice. Buyer is responsible to conduct its own due diligence, as this offering contains no representations or warranties.

FOR LEASE: Retail / Office Space

6861 Upper Afton Road | Woodbury, MN 55125



COMMERCIAL REAL ESTATE SERVICES

Jon Whitcomb Broker / Owner

1950 Northwestern Ave N #101
Stillwater, MN 55082

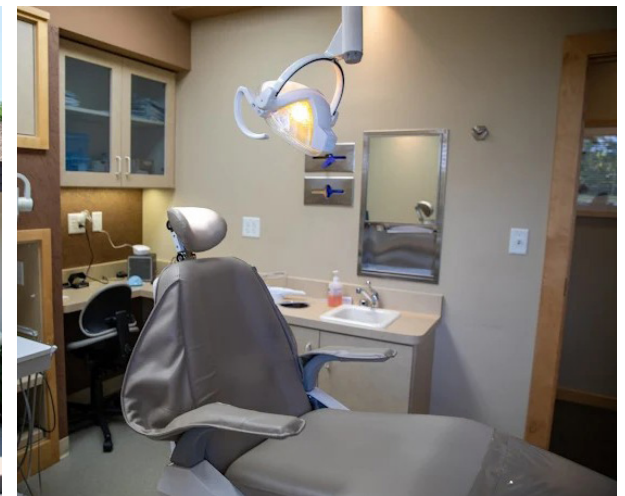
Cell 651.351.5130
Office 651.351.5005

Email Jon@MetroEastCRE.com
Web www.MetroEastCRE.com

The information contained herein has been provided by the property owner or obtained from sources deemed reliable. Although the information is believed to be accurate, it is not guaranteed. The property is subject to price change, prior sale or lease and withdrawal from the market, without notice. Buyer is responsible to conduct its own due diligence, as this offering contains no representations or warranties.

FOR LEASE: Retail / Office Space

6861 Upper Afton Road | Woodbury, MN 55125



COMMERCIAL REAL ESTATE SERVICES

Jon Whitcomb Broker / Owner

1950 Northwestern Ave N #101
Stillwater, MN 55082

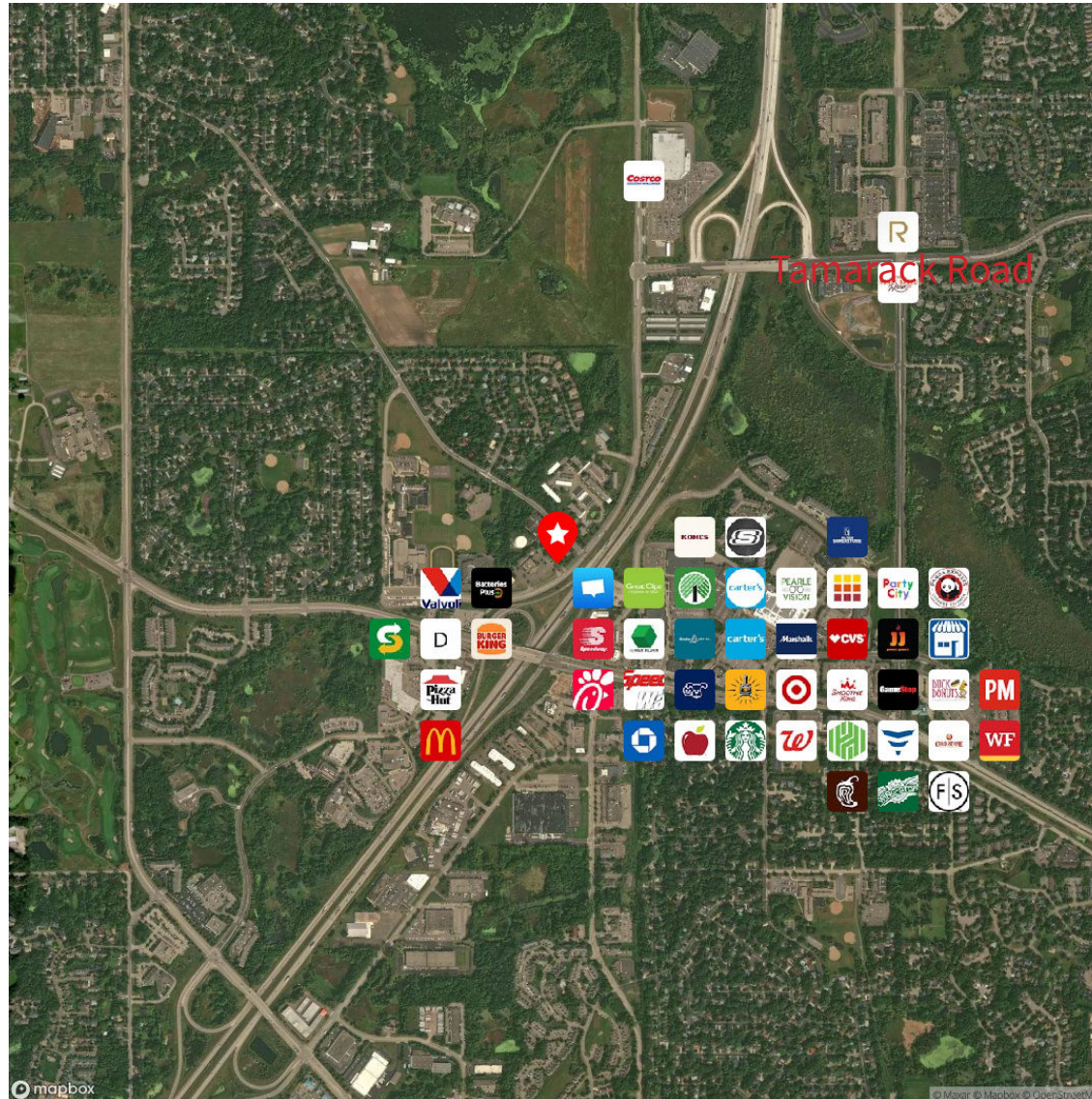
Cell 651.351.5130
Office 651.351.5005

Email Jon@MetroEastCRE.com
Web www.MetroEastCRE.com

The information contained herein has been provided by the property owner or obtained from sources deemed reliable. Although the information is believed to be accurate, it is not guaranteed. The property is subject to price change, prior sale or lease and withdrawal from the market, without notice. Buyer is responsible to conduct its own due diligence, as this offering contains no representations or warranties.

FOR LEASE: Retail / Office Space

6861 Upper Afton Road | Woodbury, MN 55125



COMMERCIAL REAL ESTATE SERVICES

Jon Whitcomb Broker / Owner

1950 Northwestern Ave N #101
Stillwater, MN 55082

Cell 651.351.5130
Office 651.351.5005

Email Jon@MetroEastCRE.com
Web www.MetroEastCRE.com

The information contained herein has been provided by the property owner or obtained from sources deemed reliable. Although the information is believed to be accurate, it is not guaranteed. The property is subject to price change, prior sale or lease and withdrawal from the market, without notice. Buyer is responsible to conduct its own due diligence, as this offering contains no representations or warranties.