

FOR SALE: I-1 Industrial Lots for Sale

S Industrial Park Road | Amery, WI



Property Information

Welcome to Amery - The City of Lakes

A place where innovation thrives, businesses grow, and families create lasting memories. Come experience the charm and opportunity of Amery!

Zoning: I-1 Light Industrial

County: Polk County

PIDs: Lot 1: 20I-0078I-0000
Lot 2: 20I-0078I-0200
Lot 3: 20I-0078I-0300

PID Acreage: Lot 1: 11.56 Acres
Lot 2: 3.76 Acres
Lot 3: 3.34 Acres

- » Three lots available
- » Utility Connections in place - including city water and sewer, electricity and fiber-optics
- » TIF district
- » 3-phase electric capacity
- » Fully buildable lots



COMMERCIAL REAL ESTATE SERVICES

Jon Whitcomb Principal / Broker

Direct 651.351.5130
Email Jon@MetroEastCRE.com

Scott Kragness Senior Sales Executive

Cell 651.323.8454
Email Scott@MetroEastCRE.com

www.MetroEastCRE.com

The information contained herein has been provided by the property owner or obtained from sources deemed reliable. Although the information is believed to be accurate, it is not guaranteed. The property is subject to price change, prior sale or lease and withdrawal from the market, without notice. Buyer is responsible to conduct its own due diligence, as this offering contains no representations or warranties.

LAND FOR SALE

S INDUSTRIAL PARK RD | AMERY, WI 54001



COMMERCIAL REAL ESTATE SERVICES

Jon Whitcomb Principal / Broker

Direct 651.351.5130

Email Jon@MetroEastCRE.com

Scott Kragness Senior Sales Executive

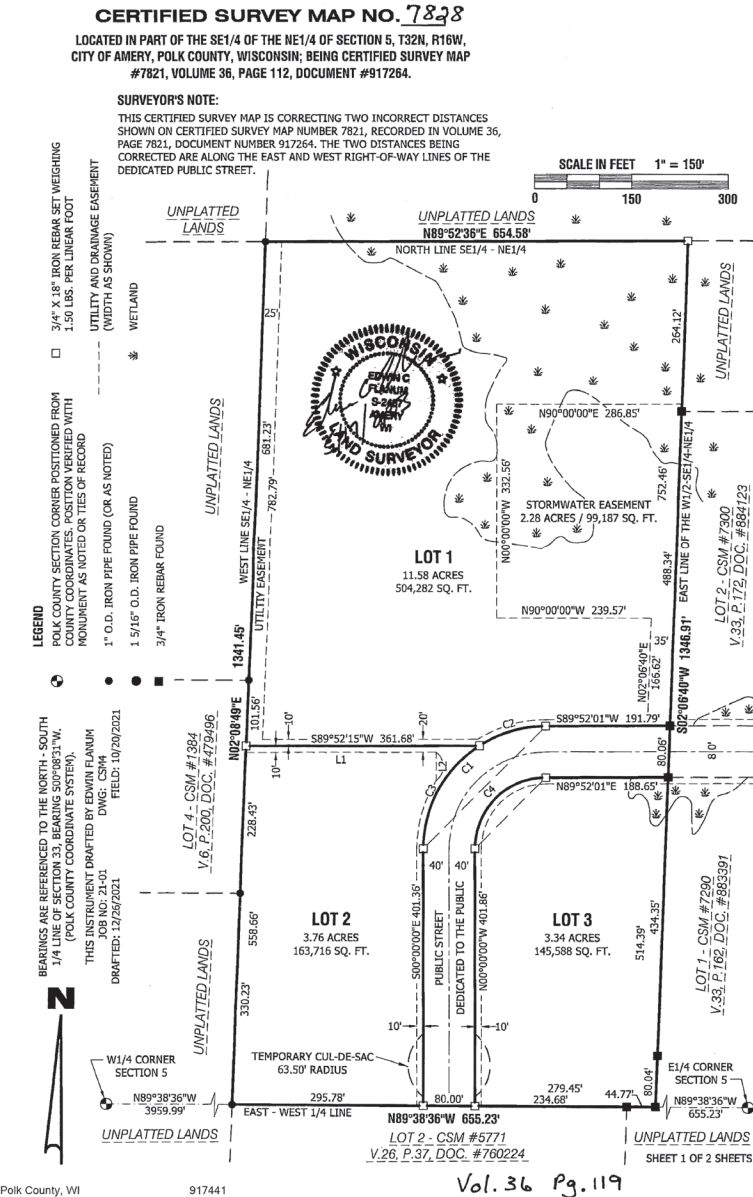
Cell 651.323.8454

Email Scott@MetroEastCRE.com

www.MetroEastCRE.com

FOR SALE: I-1 Industrial Lots for Sale

S Industrial Park Road | Amery, WI



COMMERCIAL REAL ESTATE SERVICES

Jon Whitcomb Principal / Broker

Direct 651.351.5130

Email Jon@MetroEastCRE.com

Scott Kragness Senior Sales Executive

Cell 651.323.8454

Email Scott@MetroEastCRE.com

www.MetroEastCRE.com

The information contained herein has been provided by the property owner or obtained from sources deemed reliable. Although the information is believed to be accurate, it is not guaranteed. The property is subject to price change, prior sale or lease and withdrawal from the market, without notice. Buyer is responsible to conduct its own due diligence, as this offering contains no representations or warranties.