

FOR LEASE

522 4TH STREET S
STILLWATER, MN 55082



250 SF
Office Space Available



COMMERCIAL REAL ESTATE SERVICES

Jon Whitcomb *Principal - Broker*

1950 Northwestern Ave N #101
Stillwater, MN 55082

Direct 651.351.5130
Office 651.351.5005

Email Jon@MetroEastCRE.com
Web www.MetroEastCRE.com

FOR LEASE: Office Space Downtown Stillwater

522 4th Street S | Stillwater, MN 55082



Property Information

Building Size:	5,120 SF
Available SF:	Suite 106: 250 SF* <i>* All square footages assumed to be approximate</i>
Available Date:	Now
Lease Rate:	\$695 Per Month
Exterior:	Block/Wood
Space Use:	Retail/Office
Year Built:	1969
Parking:	Street
Other Features:	<ul style="list-style-type: none">» Corner lot» Common furnished conference room» Prime location



COMMERCIAL REAL ESTATE SERVICES

Jon Whitcomb Principal - Broker

1950 Northwestern Ave N #101
Stillwater, MN 55082

Direct 651.351-5130
Office 651.351.5005

Email Jon@MetroEastCRE.com
Web www.MetroEastCRE.com

The information contained herein has been provided by the property owner or obtained from sources deemed reliable. Although the information is believed to be accurate, it is not guaranteed. The property is subject to price change, prior sale or lease and withdrawal from the market, without notice. Buyer is responsible to conduct its own due diligence, as this offering contains no representations or warranties.

FOR LEASE: Office Space Downtown Stillwater

522 4th Street S | Stillwater, MN 55082



COMMERCIAL REAL ESTATE SERVICES

Jon Whitcomb *Principal - Broker*

1950 Northwestern Ave N #101
Stillwater, MN 55082

Direct 651.351-5130
Office 651.351.5005

Email Jon@MetroEastCRE.com
Web www.MetroEastCRE.com

The information contained herein has been provided by the property owner or obtained from sources deemed reliable. Although the information is believed to be accurate, it is not guaranteed. The property is subject to price change, prior sale or lease and withdrawal from the market, without notice. Buyer is responsible to conduct its own due diligence, as this offering contains no representations or warranties.

FOR LEASE: Office Space Downtown Stillwater

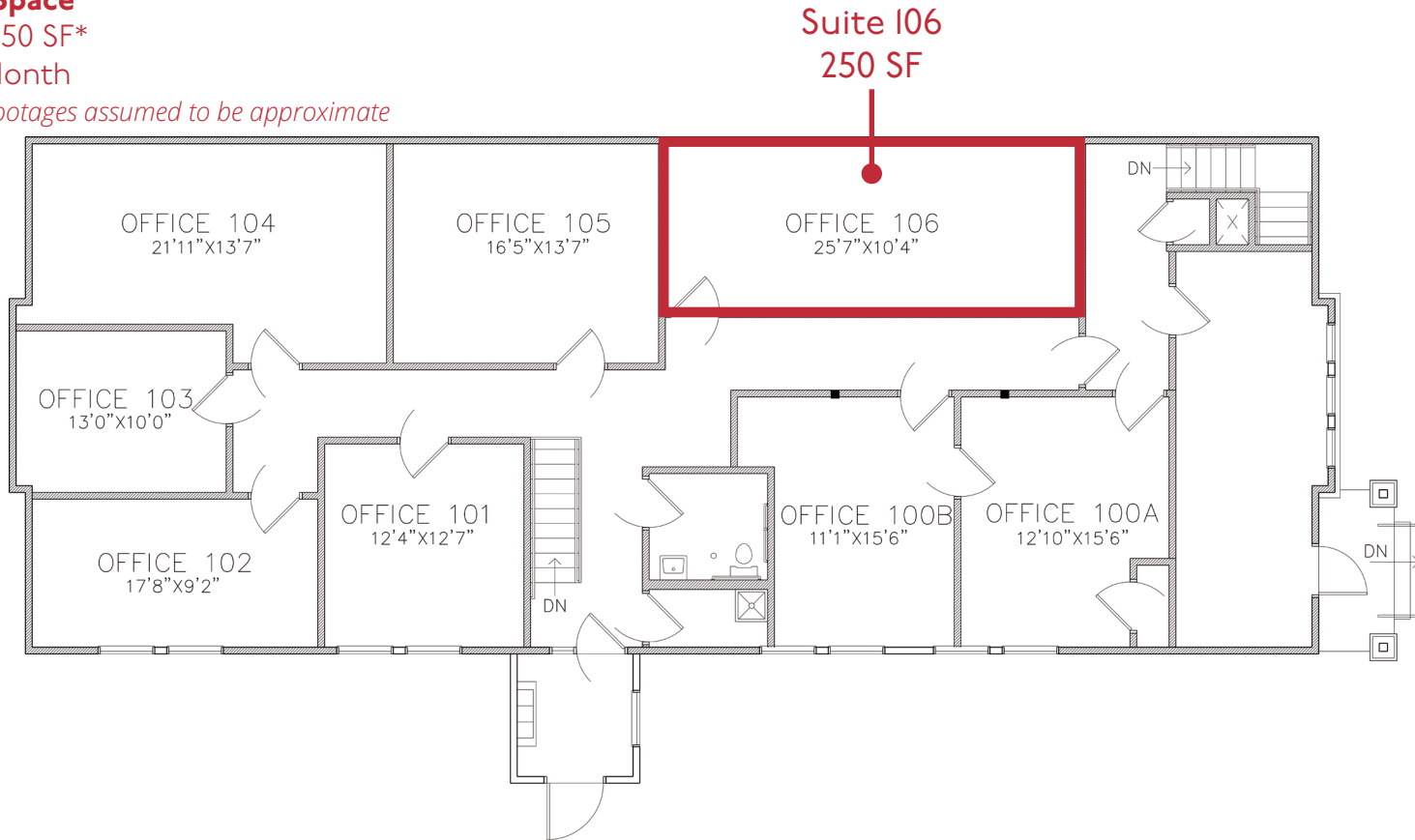
522 4th Street S | Stillwater, MN 55082

Available Space

Suite 106: 250 SF*

\$695 Per Month

* All square footages assumed to be approximate



FLOOR PLAN
SCALE: 1/8" = 1'-0"



COMMERCIAL REAL ESTATE SERVICES

Jon Whitcomb Principal - Broker

1950 Northwestern Ave N #101
Stillwater, MN 55082

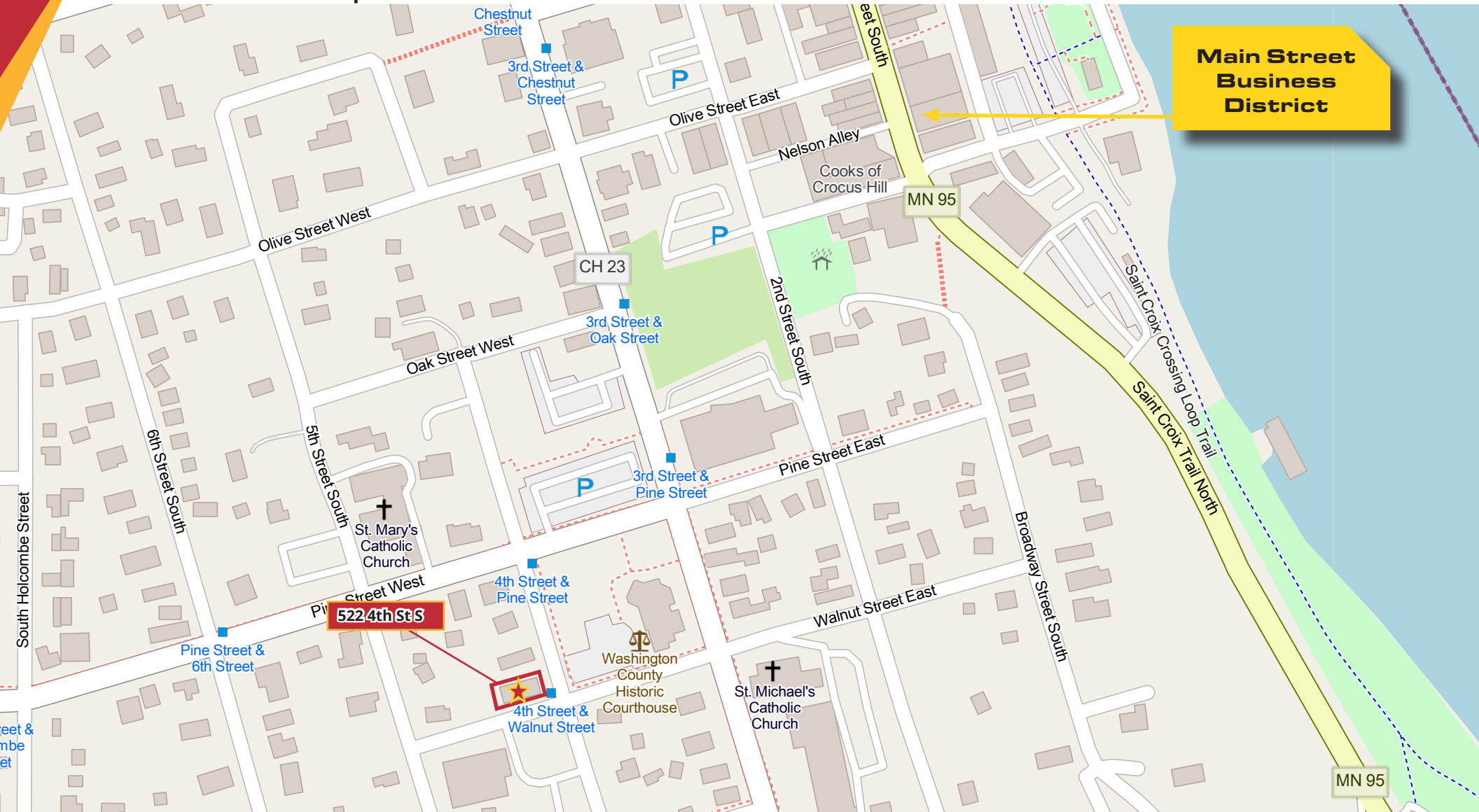
Direct 651.351-5130
Office 651.351.5005

Email Jon@MetroEastCRE.com
Web www.MetroEastCRE.com

The information contained herein has been provided by the property owner or obtained from sources deemed reliable. Although the information is believed to be accurate, it is not guaranteed. The property is subject to price change, prior sale or lease and withdrawal from the market, without notice. Buyer is responsible to conduct its own due diligence, as this offering contains no representations or warranties.

FOR LEASE: Office Space Downtown Stillwater

522 4th Street S | Stillwater, MN 55082



COMMERCIAL REAL ESTATE SERVICES

Jon Whitcomb *Principal - Broker*

1950 Northwestern Ave N #101
Stillwater, MN 55082

Direct 651.351-5130
Office 651.351.5005

Email Jon@MetroEastCRE.com
Web www.MetroEastCRE.com

The information contained herein has been provided by the property owner or obtained from sources deemed reliable. Although the information is believed to be accurate, it is not guaranteed. The property is subject to price change, prior sale or lease and withdrawal from the market, without notice. Buyer is responsible to conduct its own due diligence, as this offering contains no representations or warranties.