

# LAND FOR SALE

9613 145TH AVE NE | FOREST LAKE, MN 55025



Gander Drive

**RVs.com**  
by CAMPING WORLD



**Bare**  
HOME

Hornsby St NE

**34.65 Acres**

145th Ave NE

**FREWAY**  
MINI  
STORAGE



COMMERCIAL REAL ESTATE SERVICES

**Scott Kragness** Senior Sales Executive

1950 Northwestern Ave N #101  
Stillwater, MN 55082

Cell 651.323.8454  
Office 651.351.5005

Email [Scott@MetroEastCRE.com](mailto:Scott@MetroEastCRE.com)  
Web [www.MetroEastCRE.com](http://www.MetroEastCRE.com)



# FOR SALE: 34 Acres - Zoned General Business

9613 145th Ave NE | Forest Lake, MN 55025



## Property Information

Excellent access to I-35, nearby many area retailers and corporate occupiers.

Lot Size: 34.65 Acres

Zoning: General Business  
[Click Here for Zoning information](#)

County: Anoka County

PID: 25-32-22-14-001

Asking Price: \$1,995,000

- » Minimal land clearing required
- » General Business Zoning provides for professional and commercial offices, low impact services, retail businesses, small building trades shops, machine shops, welding shops, and warehousing
- » House on property can be demolished
- » City Water/Sewer at road



COMMERCIAL REAL ESTATE SERVICES

**Scott Kragness** Senior Sales Executive

1950 Northwestern Ave N #101  
Stillwater, MN 55082

Cell 651.323.8454  
Office 651.351.5005

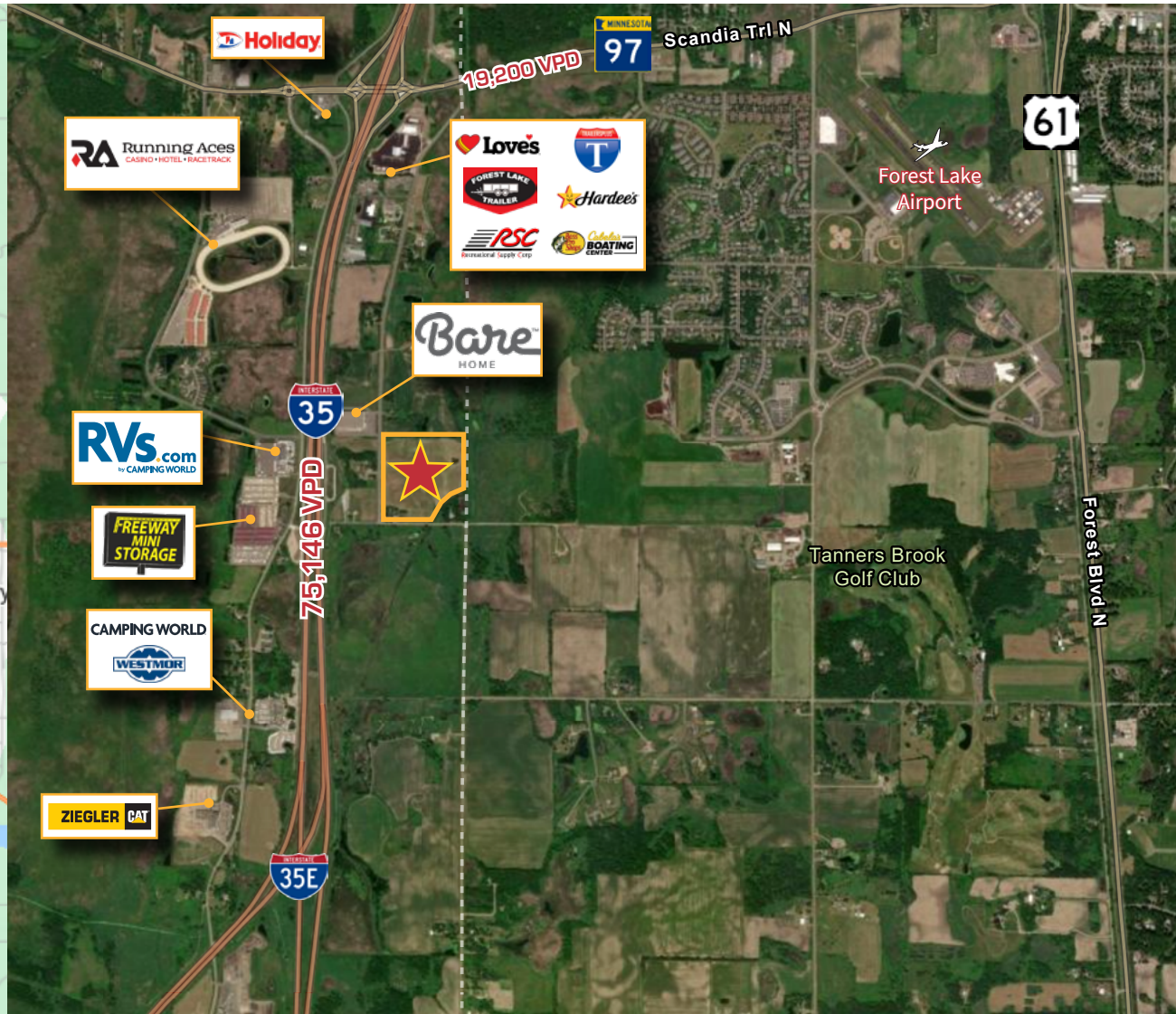
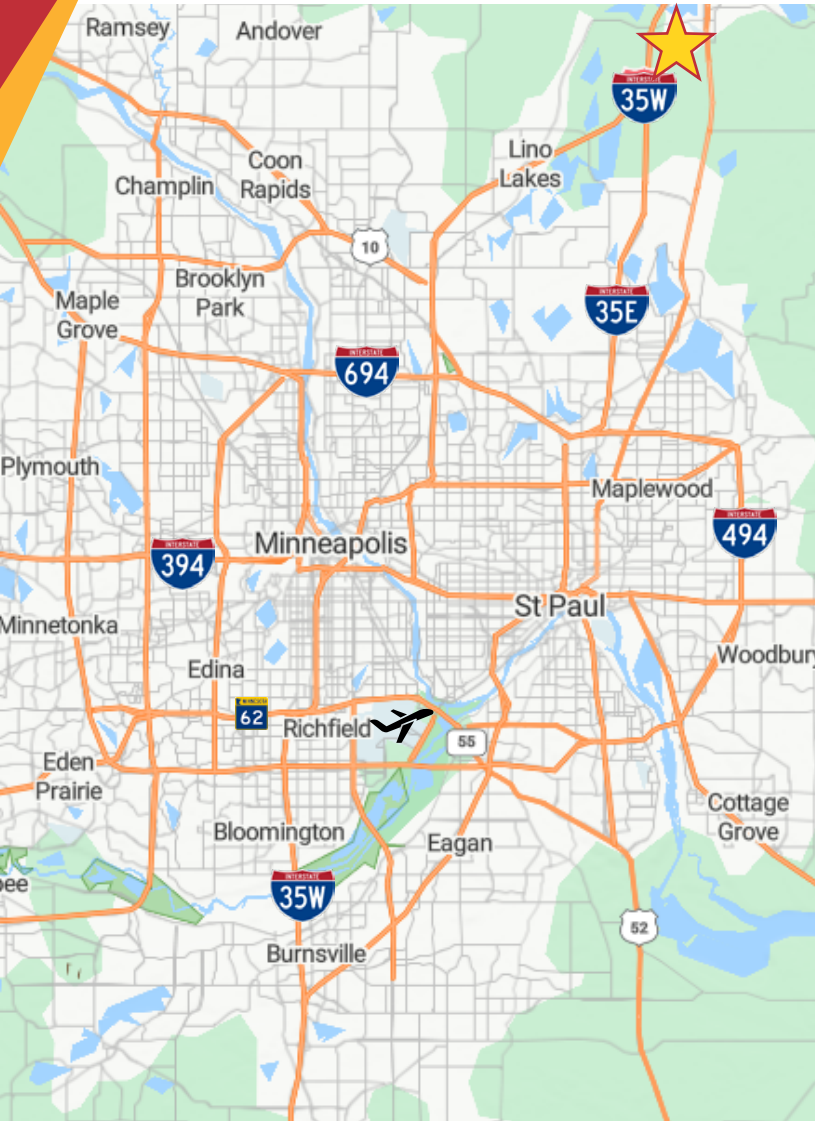
Email [Scott@MetroEastCRE.com](mailto:Scott@MetroEastCRE.com)  
Web [www.MetroEastCRE.com](http://www.MetroEastCRE.com)

The information contained herein has been provided by the property owner or obtained from sources deemed reliable. Although the information is believed to be accurate, it is not guaranteed. The property is subject to price change, prior sale or lease and withdrawal from the market, without notice. Buyer is responsible to conduct its own due diligence, as this offering contains no representations or warranties.



# FOR SALE: 34 Acres - Zoned General Business

9613 145th Ave NE | Forest Lake, MN 55025



COMMERCIAL REAL ESTATE SERVICES

**Scott Kragness** Senior Sales Executive

1950 Northwestern Ave N #101  
Stillwater, MN 55082

Cell 651.323.8454  
Office 651.351.5005

Email [Scott@MetroEastCRE.com](mailto:Scott@MetroEastCRE.com)  
Web [www.MetroEastCRE.com](http://www.MetroEastCRE.com)

The information contained herein has been provided by the property owner or obtained from sources deemed reliable. Although the information is believed to be accurate, it is not guaranteed. The property is subject to price change, prior sale or lease and withdrawal from the market, without notice. Buyer is responsible to conduct its own due diligence, as this offering contains no representations or warranties.