

FOR LEASE

1050 SELBY AVE
ST PAUL, MN 55104

705 SF

Office / Retail Space Available



Jon Whitcomb Broker / Owner

1950 Northwestern Ave N #101
Stillwater, MN 55082

Cell 651.351.5150
Office 651.351.5005

Email Jon@MetroEastCRE.com
Web www.MetroEastCRE.com



FOR LEASE: Retail / Office Space

1050 Selby Ave | St Paul, MN 55104



Highlights

- ♦ Prime St Paul Location
- ♦ Building features two main floor commercial suites and two second story apartment units
- ♦ Easy access to Lexington Pkwy
- ♦ Private entrances
- ♦ Shared restroom

Property Information

Building Size:	4,794 SF Total
Available Space:	First Floor Retail/Office Suite 1048: Fully Leased Suite 1050: 705 SF Main Floor - Approx. 900 SF Basement
Rental Rate:	Suite 1050: \$2,000 Per Month Gross
Parking:	5 stall surface lot and street parking
Year Built:	1915
Renovated:	2023
A/C / Heat:	100% Air Conditioned (heating and cooling unit replaced in 2021)



COMMERCIAL REAL ESTATE SERVICES

Jon Whitcomb Broker / Owner

1950 Northwestern Ave N #101
Stillwater, MN 55082

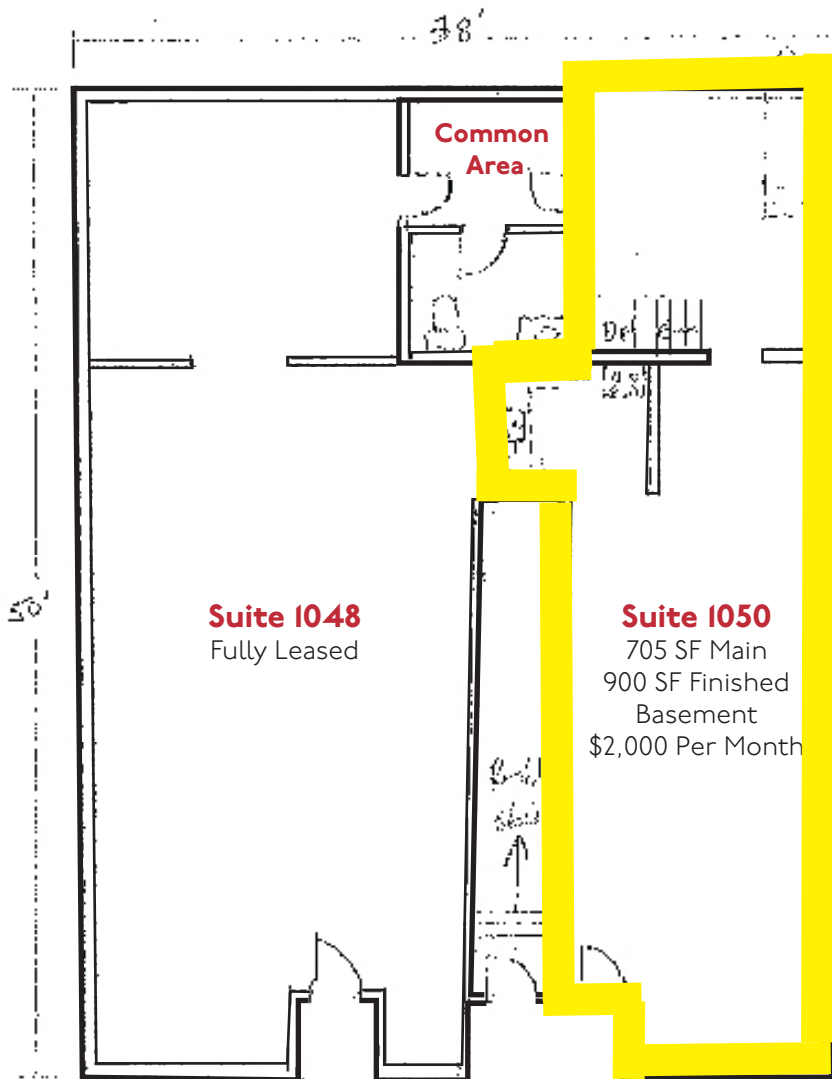
Cell 651.351.5150
Office 651.351.5005

Email Jon@MetroEastCRE.com
Web www.MetroEastCRE.com

The information contained herein has been provided by the property owner or obtained from sources deemed reliable. Although the information is believed to be accurate, it is not guaranteed. The property is subject to price change, prior sale or lease and withdrawal from the market, without notice. Buyer is responsible to conduct its own due diligence, as this offering contains no representations or warranties.

FOR LEASE: Retail / Office Space

1050 Selby Ave | St Paul, MN 55104



COMMERCIAL REAL ESTATE SERVICES

Jon Whitcomb Broker / Owner

1950 Northwestern Ave N #101
Stillwater, MN 55082

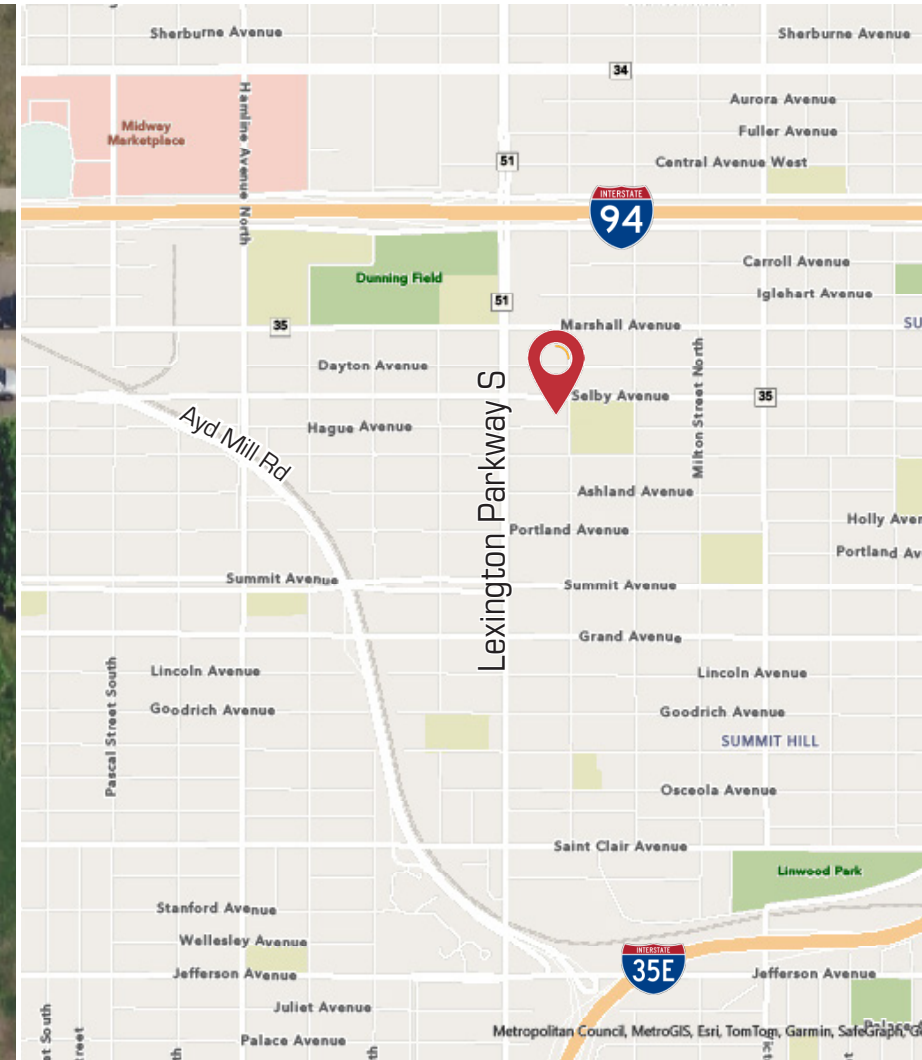
Cell 651.351.5150
Office 651.351.5005

Email Jon@MetroEastCRE.com
Web www.MetroEastCRE.com

The information contained herein has been provided by the property owner or obtained from sources deemed reliable. Although the information is believed to be accurate, it is not guaranteed. The property is subject to price change, prior sale or lease and withdrawal from the market, without notice. Buyer is responsible to conduct its own due diligence, as this offering contains no representations or warranties.

FOR LEASE: Retail / Office Space

1050 Selby Ave | St Paul, MN 55104



COMMERCIAL REAL ESTATE SERVICES

Jon Whitcomb Broker / Owner

1950 Northwestern Ave N #101
Stillwater, MN 55082

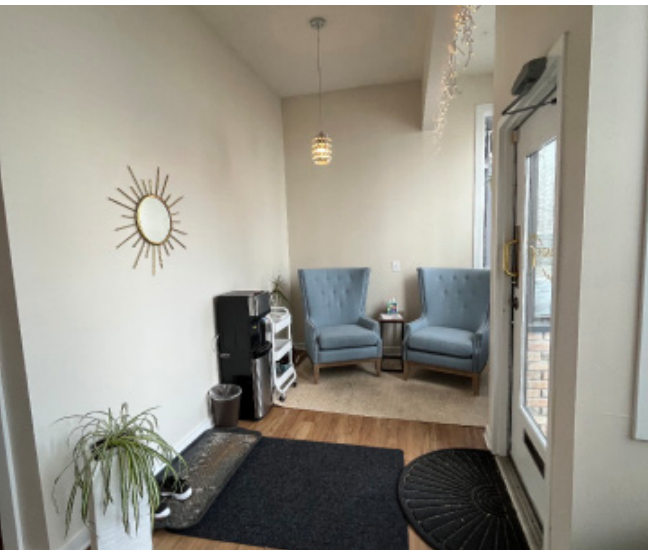
Cell 651.351.5150
Office 651.351.5005

Email Jon@MetroEastCRE.com
Web www.MetroEastCRE.com

The information contained herein has been provided by the property owner or obtained from sources deemed reliable. Although the information is believed to be accurate, it is not guaranteed. The property is subject to price change, prior sale or lease and withdrawal from the market, without notice. Buyer is responsible to conduct its own due diligence, as this offering contains no representations or warranties.

FOR LEASE: Retail / Office Space

1050 Selby Ave | St Paul, MN 55104



COMMERCIAL REAL ESTATE SERVICES

Jon Whitcomb Broker / Owner

1950 Northwestern Ave N #101
Stillwater, MN 55082

Cell 651.351.5150
Office 651.351.5005

Email Jon@MetroEastCRE.com
Web www.MetroEastCRE.com

The information contained herein has been provided by the property owner or obtained from sources deemed reliable. Although the information is believed to be accurate, it is not guaranteed. The property is subject to price change, prior sale or lease and withdrawal from the market, without notice. Buyer is responsible to conduct its own due diligence, as this offering contains no representations or warranties.

FOR LEASE: Retail / Office Space

1050 Selby Ave | St Paul, MN 55104



COMMERCIAL REAL ESTATE SERVICES

Jon Whitcomb Broker / Owner

1950 Northwestern Ave N #101
Stillwater, MN 55082

Cell 651.351.5150
Office 651.351.5005

Email Jon@MetroEastCRE.com
Web www.MetroEastCRE.com

The information contained herein has been provided by the property owner or obtained from sources deemed reliable. Although the information is believed to be accurate, it is not guaranteed. The property is subject to price change, prior sale or lease and withdrawal from the market, without notice. Buyer is responsible to conduct its own due diligence, as this offering contains no representations or warranties.