

FOR LEASE

466I HIGHWAY 61 N
WHITE BEAR LAKE, MN



2,295 - 3,078 SF
2nd Story Office Space



COMMERCIAL REAL ESTATE SERVICES

Scott Kragness *Senior Sales Executive*

1950 Northwestern Ave N #101
Stillwater, MN 55082

Cell 651.323.8454
Office 651.351.5005

Email Scott@MetroEastCRE.com
Web www.MetroEastCRE.com

FOR LEASE: Second Story Office Suite

4661 Highway 61 N | White Bear Lake, MN



Property Information

| | |
|------------------|--|
| Building Size: | 32,000 SF |
| Space Available: | 2,295 - 3,078 SF |
| Lease Rate: | \$16.00 PSF NNN |
| 2024 Tax & CAM: | \$7.03 PSF |
| Stories: | Two (2) |
| Class: | High finish Class B |
| Year Built: | 1990 |
| Parking: | 82 total stalls |
| Features: | <ul style="list-style-type: none">◆ Break Room◆ Conference Room◆ Pylon signage◆ Prime Hwy 61 frontage◆ Ample windows◆ Move-in Ready Space |



COMMERCIAL REAL ESTATE SERVICES

Scott Kragness Senior Sales Executive

1950 Northwestern Ave N #101
Stillwater, MN 55082

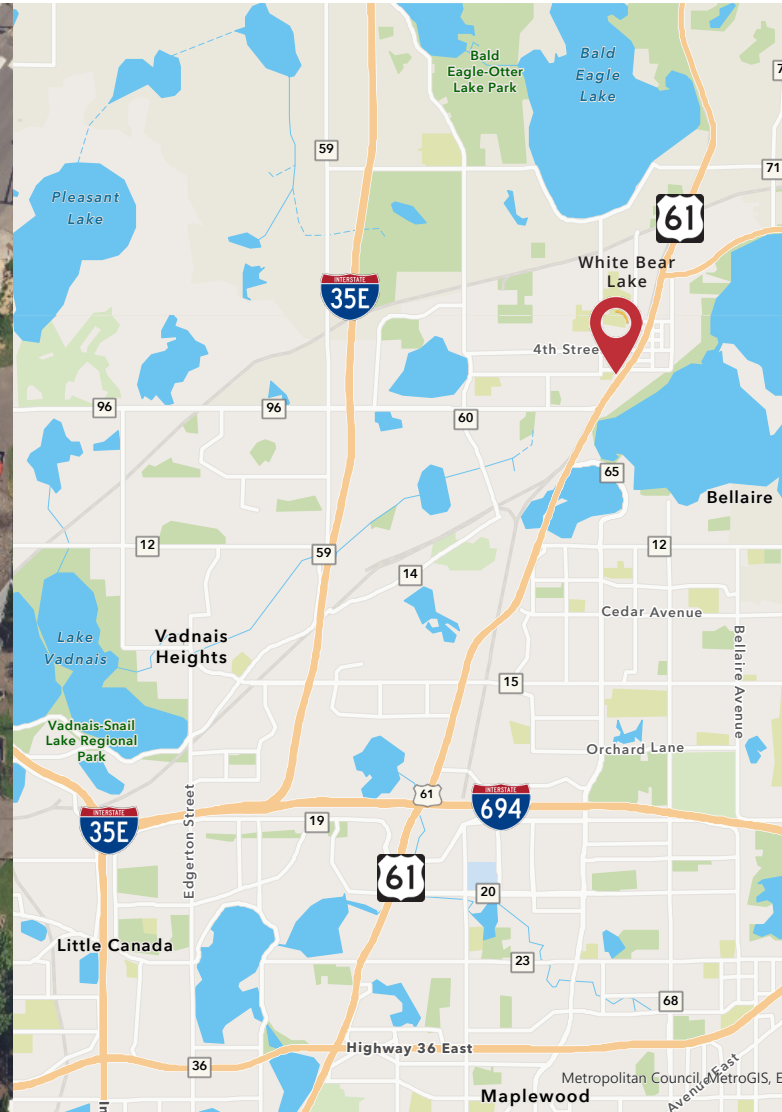
Cell 651.323.8454
Office 651.351.5005

Email Scott@MetroEastCRE.com
Web www.MetroEastCRE.com

The information contained herein has been provided by the property owner or obtained from sources deemed reliable. Although the information is believed to be accurate, it is not guaranteed. The property is subject to price change, prior sale or lease and withdrawal from the market, without notice. Buyer is responsible to conduct its own due diligence, as this offering contains no representations or warranties.

FOR LEASE: Second Story Office Suite

4661 Highway 61 N | White Bear Lake, MN



COMMERCIAL REAL ESTATE SERVICES

Scott Kragness Senior Sales Executive

1950 Northwestern Ave N #101
Stillwater, MN 55082

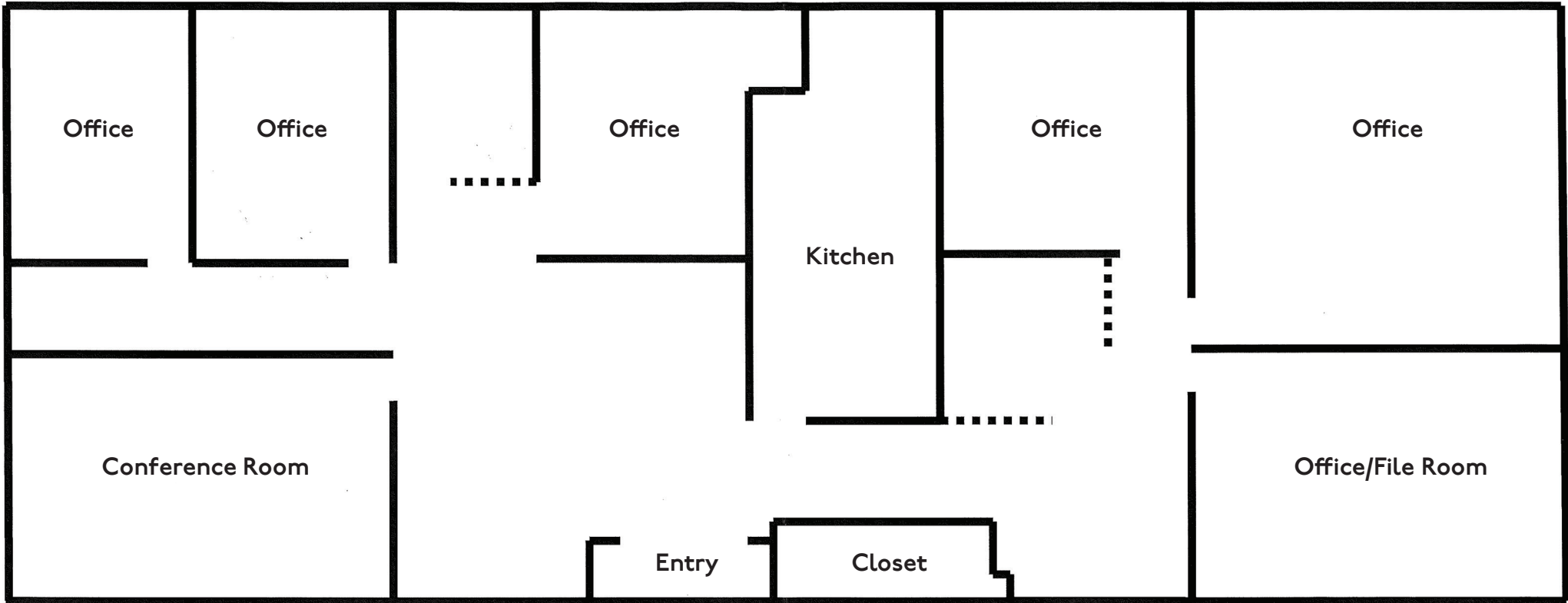
Cell 651.323.8454
Office 651.351.5005

Email Scott@MetroEastCRE.com
Web www.MetroEastCRE.com

The information contained herein has been provided by the property owner or obtained from sources deemed reliable. Although the information is believed to be accurate, it is not guaranteed. The property is subject to price change, prior sale or lease and withdrawal from the market, without notice. Buyer is responsible to conduct its own due diligence, as this offering contains no representations or warranties.

FOR LEASE: Second Story Office Suite

4661 Highway 61 N | White Bear Lake, MN



COMMERCIAL REAL ESTATE SERVICES

Scott Kragness Senior Sales Executive

1950 Northwestern Ave N #101
Stillwater, MN 55082

Cell 651.323.8454
Office 651.351.5005

Email Scott@MetroEastCRE.com
Web www.MetroEastCRE.com

The information contained herein has been provided by the property owner or obtained from sources deemed reliable. Although the information is believed to be accurate, it is not guaranteed. The property is subject to price change, prior sale or lease and withdrawal from the market, without notice. Buyer is responsible to conduct its own due diligence, as this offering contains no representations or warranties.

FOR LEASE: Second Story Office Suite

4661 Highway 61 N | White Bear Lake, MN



Scott Kragness Senior Sales Executive

1950 Northwestern Ave N #101
Stillwater, MN 55082

Cell 651.323.8454
Office 651.351.5005

Email Scott@MetroEastCRE.com
Web www.MetroEastCRE.com

The information contained herein has been provided by the property owner or obtained from sources deemed reliable. Although the information is believed to be accurate, it is not guaranteed. The property is subject to price change, prior sale or lease and withdrawal from the market, without notice. Buyer is responsible to conduct its own due diligence, as this offering contains no representations or warranties.



COMMERCIAL REAL ESTATE SERVICES

FOR LEASE: Second Story Office Suite

466I Highway 6I N | White Bear Lake, MN



COMMERCIAL REAL ESTATE SERVICES

Scott Kragness Senior Sales Executive

1950 Northwestern Ave N #101
Stillwater, MN 55082

Cell 651.323.8454
Office 651.351.5005

Email Scott@MetroEastCRE.com
Web www.MetroEastCRE.com

The information contained herein has been provided by the property owner or obtained from sources deemed reliable. Although the information is believed to be accurate, it is not guaranteed. The property is subject to price change, prior sale or lease and withdrawal from the market, without notice. Buyer is responsible to conduct its own due diligence, as this offering contains no representations or warranties.

FOR LEASE: Second Story Office Suite

4661 Highway 61 N | White Bear Lake, MN



Scott Kragness Senior Sales Executive

1950 Northwestern Ave N #101
Stillwater, MN 55082

Cell 651.323.8454
Office 651.351.5005

Email Scott@MetroEastCRE.com
Web www.MetroEastCRE.com

The information contained herein has been provided by the property owner or obtained from sources deemed reliable. Although the information is believed to be accurate, it is not guaranteed. The property is subject to price change, prior sale or lease and withdrawal from the market, without notice. Buyer is responsible to conduct its own due diligence, as this offering contains no representations or warranties.



COMMERCIAL REAL ESTATE SERVICES

FOR LEASE: Second Story Office Suite

466I Highway 6I N | White Bear Lake, MN



Scott Kragness Senior Sales Executive

1950 Northwestern Ave N #101
Stillwater, MN 55082

Cell 651.323.8454
Office 651.351.5005

Email Scott@MetroEastCRE.com
Web www.MetroEastCRE.com

The information contained herein has been provided by the property owner or obtained from sources deemed reliable. Although the information is believed to be accurate, it is not guaranteed. The property is subject to price change, prior sale or lease and withdrawal from the market, without notice. Buyer is responsible to conduct its own due diligence, as this offering contains no representations or warranties.



COMMERCIAL REAL ESTATE SERVICES