

FOR LEASE

MONETARY CENTRE
2424 MONETARY BLVD
HUDSON, WI 54016

1,988 SF
Office Space



COMMERCIAL REAL ESTATE SERVICES



Jon Whitcomb *Principal | Broker*

1950 Northwestern Ave N #101
Stillwater, MN 55082

Direct 651.351.5130
Office 651.351.5005

Email Jon@MetroEastCRE.com
Web www.MetroEastCRE.com

FOR LEASE: Professional Office Space

Monetary Centre | 2424 Monetary Blvd | Hudson, WI 54016



Fantastic move-in ready Class A office space for lease at Monetary Centre in Hudson. Primely located in Hudson's Retail district, with easy access to I-94, located at Carmichael Rd and Hanley Rd. Featuring beautiful glass lines, monument and building signage, and pristine landscaping.

Property Information

Building Size:	21,000 SF
Available SF:	Suite 012: 1,988 SF Garden Level Space
Lease Rate:	Negotiable
2025 Tax & CAM:	\$10.14 PSF
Date Available:	Immediately
Year Built:	2007
Parking:	Ample Surface Lot
Class:	A



COMMERCIAL REAL ESTATE SERVICES

Jon Whitcomb *Principal | Broker*

1950 Northwestern Ave N #101
Stillwater, MN 55082

Direct 651.351.5130
Office 651.351.5005

Email Jon@MetroEastCRE.com
Web www.MetroEastCRE.com

The information contained herein has been provided by the property owner or obtained from sources deemed reliable. Although the information is believed to be accurate, it is not guaranteed. The property is subject to price change, prior sale or lease and withdrawal from the market, without notice. Buyer is responsible to conduct its own due diligence, as this offering contains no representations or warranties.

FOR LEASE: Professional Office Space

Monetary Centre | 2424 Monetary Blvd | Hudson, WI 54016



COMMERCIAL REAL ESTATE SERVICES

Jon Whitcomb Principal | Broker

1950 Northwestern Ave N #101
Stillwater, MN 55082

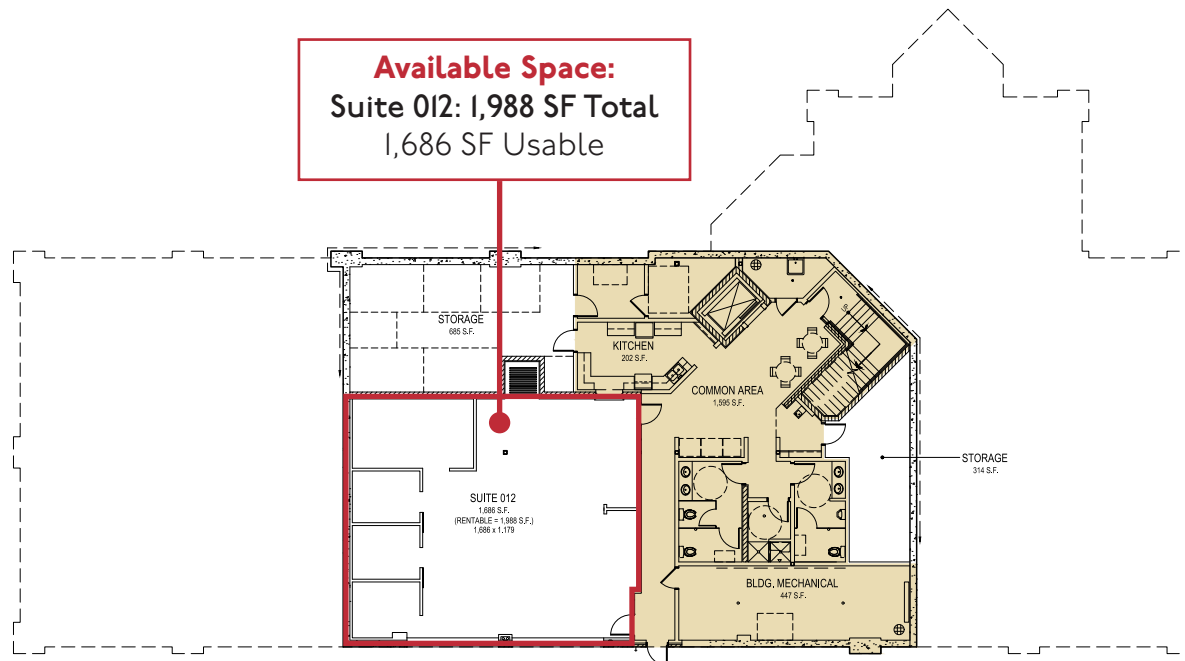
Direct 651.351.5130
Office 651.351.5005

Email Jon@MetroEastCRE.com
Web www.MetroEastCRE.com

The information contained herein has been provided by the property owner or obtained from sources deemed reliable. Although the information is believed to be accurate, it is not guaranteed. The property is subject to price change, prior sale or lease and withdrawal from the market, without notice. Buyer is responsible to conduct its own due diligence, as this offering contains no representations or warranties.

FOR LEASE: Professional Office Space

Monetary Centre | 2424 Monetary Blvd | Hudson, WI 54016



1
A100
EXISTING LOWER LEVEL FLOOR PLAN
SCALE: 1/8" = 1'-0"

EXISTING LOWER LEVEL = 4,829 S.F.



MARK	DATE	DESCRIPTION

MONETARY CENTRE
2424 MONETARY BLVD.
HUDSON, WI

AVRES ASSOCIATES
Real Estate Services
2424 Monetary Blvd., Suite 204
Hudson, WI 54016
Phone: (715) 426-5600
Fax: (715) 426-5606

EXISTING LOWER
LEVEL FLOOR PLAN

NOT FOR CONSTRUCTION -
PROJECT NO. 08-1950
A100
15 MARCH 2021



COMMERCIAL REAL ESTATE SERVICES

Jon Whitcomb Principal | Broker

1950 Northwestern Ave N #101
Stillwater, MN 55082

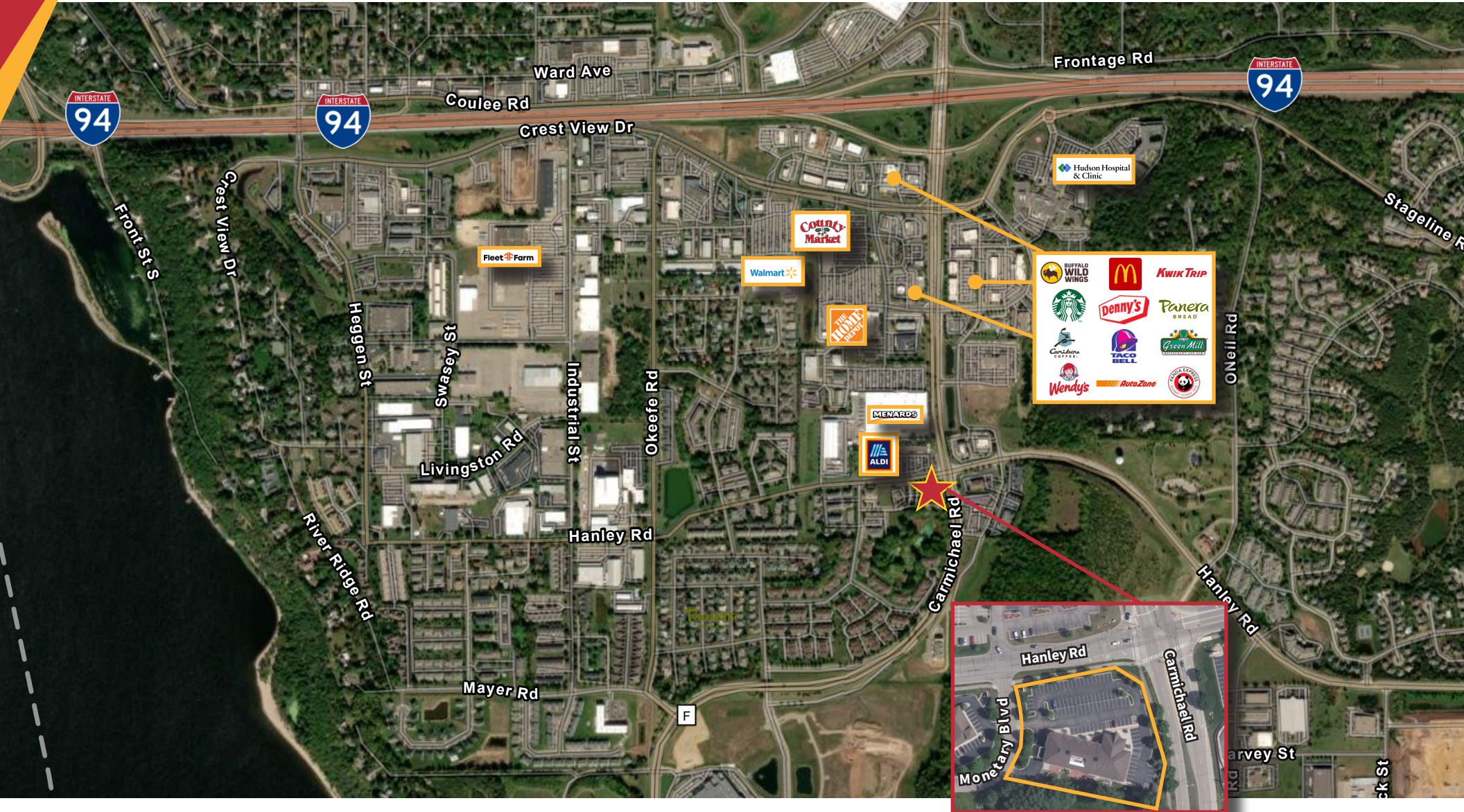
Direct 651.351.5130
Office 651.351.5005

Email Jon@MetroEastCRE.com
Web www.MetroEastCRE.com

The information contained herein has been provided by the property owner or obtained from sources deemed reliable. Although the information is believed to be accurate, it is not guaranteed. The property is subject to price change, prior sale or lease and withdrawal from the market, without notice. Buyer is responsible to conduct its own due diligence, as this offering contains no representations or warranties.

FOR LEASE: Professional Office Space

Monetary Centre | 2424 Monetary Blvd | Hudson, WI 54016



COMMERCIAL REAL ESTATE SERVICES

Jon Whitcomb Principal | Broker

1950 Northwestern Ave N #101
Stillwater, MN 55082

Direct 651.351.5130
Office 651.351.5005

Email Jon@MetroEastCRE.com
Web www.MetroEastCRE.com

The information contained herein has been provided by the property owner or obtained from sources deemed reliable. Although the information is believed to be accurate, it is not guaranteed. The property is subject to price change, prior sale or lease and withdrawal from the market, without notice. Buyer is responsible to conduct its own due diligence, as this offering contains no representations or warranties.