

# SUBLEASE AVAILABLE

1970 NORTHWESTERN AVE  
STILLWATER, MN 55082



**1,551 SF**  
**Professional Office Space**



COMMERCIAL REAL ESTATE SERVICES

**Jon Whitcomb** *Principal | Broker*

1950 Northwestern Ave N #101  
Stillwater, MN 55082

Cell 651.351.5130  
Office 651.351.5005

Email Jon@MetroEastCRE.com  
Web [www.MetroEastCRE.com](http://www.MetroEastCRE.com)

# SUBLEASE AVAILABLE: Heartland Office Village

1970 Northwestern Ave | Stillwater, MN 55082



## Property Information

Building Size:	11,812 SF
Available Space:	Suite 100: 1,551 SF
Sublease Term:	Through February 28, 2026
Lease Rate:	<b>\$15.00 PSF NNN</b>
2025 Tax & CAM:	<b>\$11.59 PSF</b>
Year Built:	1998
Space Features:	<ul style="list-style-type: none"><li>♦ Three (3) private offices</li><li>♦ Conference Room</li><li>♦ Break Room with kitchenette</li><li>♦ Abundant natural light</li><li>♦ Private entrance with lobby</li></ul>
Parking:	40 stall surface lot
Property Highlights:	<ul style="list-style-type: none"><li>♦ Beautifully landscaped</li><li>♦ High-profile location</li><li>♦ Suite, directory and building entrance signage</li><li>♦ Well maintained building</li></ul>



COMMERCIAL REAL ESTATE SERVICES

**Jon Whitcomb** Principal | Broker

1950 Northwestern Ave N #101  
Stillwater, MN 55082

Cell 651.351.5130  
Office 651.351.5005

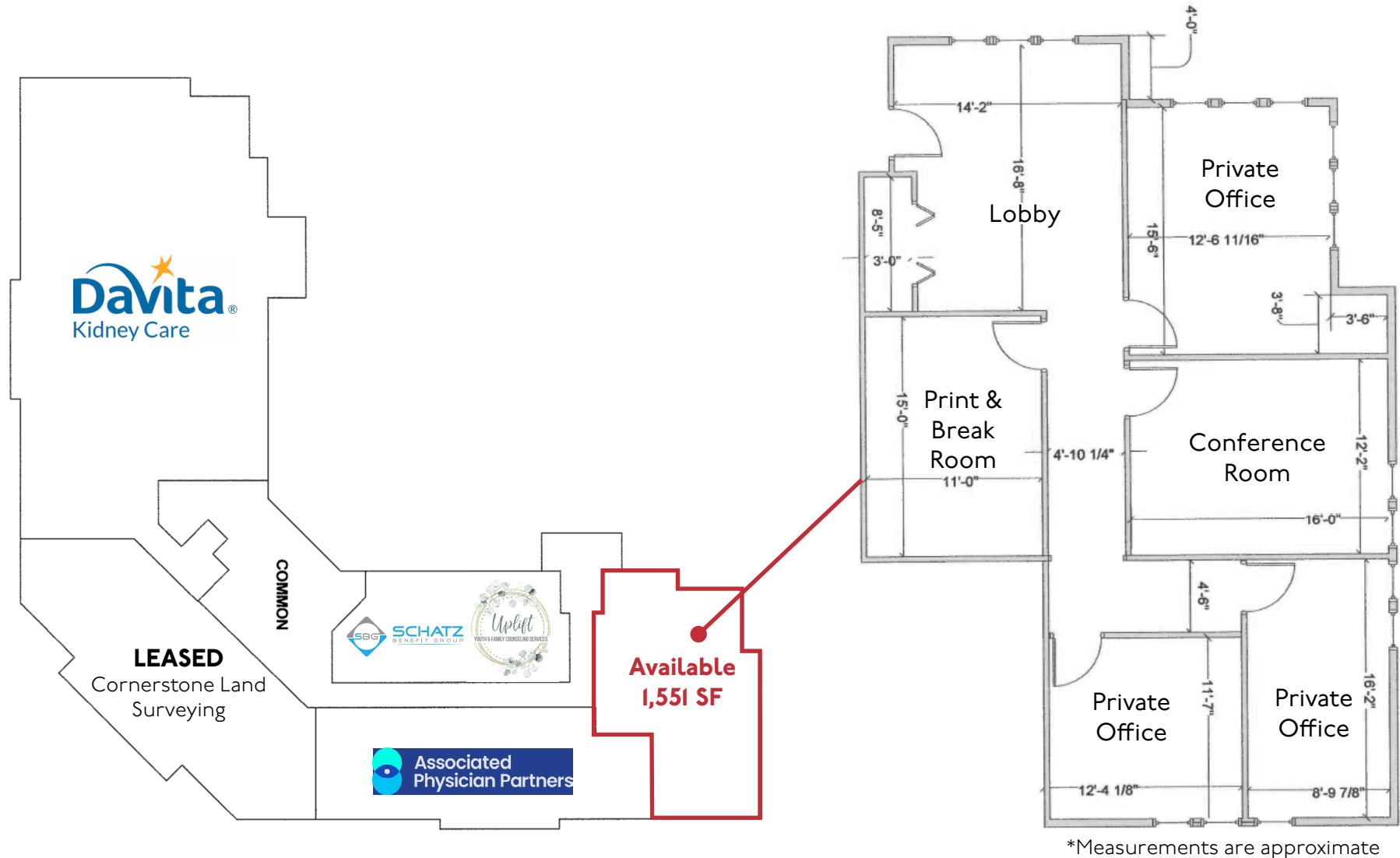
Email [Jon@MetroEastCRE.com](mailto:Jon@MetroEastCRE.com)  
Web [www.MetroEastCRE.com](http://www.MetroEastCRE.com)

The information contained herein has been provided by the property owner or obtained from sources deemed reliable. Although the information is believed to be accurate, it is not guaranteed. The property is subject to price change, prior sale or lease and withdrawal from the market, without notice. Buyer is responsible to conduct its own due diligence, as this offering contains no representations or warranties.



# SUBLEASE AVAILABLE: Heartland Office Village

1970 Northwestern Ave | Stillwater, MN 55082



COMMERCIAL REAL ESTATE SERVICES

**Jon Whitcomb** Principal | Broker

1950 Northwestern Ave N #101  
Stillwater, MN 55082

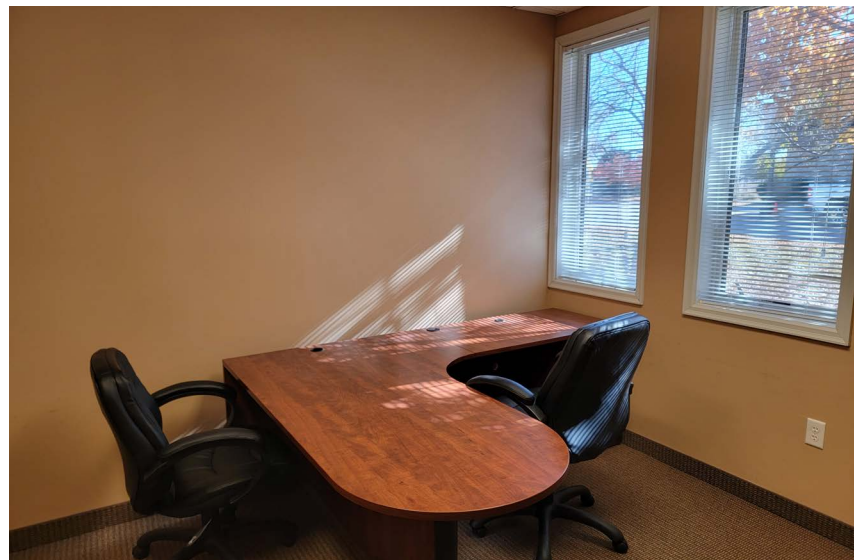
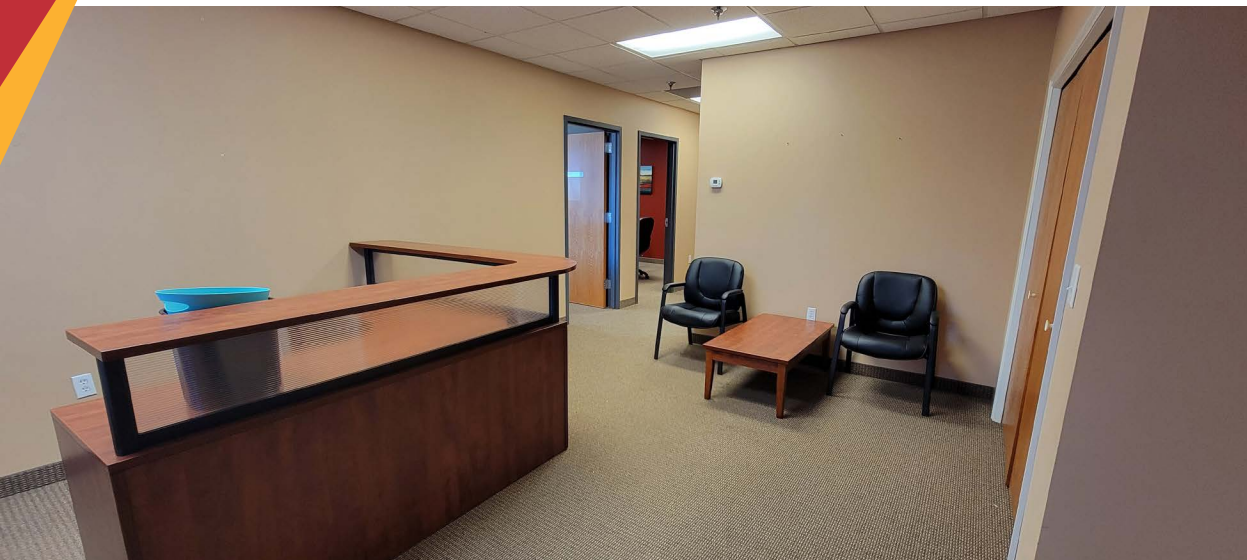
Cell 651.351.5130  
Office 651.351.5005

Email Jon@MetroEastCRE.com  
Web [www.MetroEastCRE.com](http://www.MetroEastCRE.com)

The information contained herein has been provided by the property owner or obtained from sources deemed reliable. Although the information is believed to be accurate, it is not guaranteed. The property is subject to price change, prior sale or lease and withdrawal from the market, without notice. Buyer is responsible to conduct its own due diligence, as this offering contains no representations or warranties.

# SUBLEASE AVAILABLE: Heartland Office Village

1970 Northwestern Ave | Stillwater, MN 55082



COMMERCIAL REAL ESTATE SERVICES

**Jon Whitcomb** *Principal | Broker*

1950 Northwestern Ave N #101  
Stillwater, MN 55082

Cell 651.351.5130  
Office 651.351.5005

Email [Jon@MetroEastCRE.com](mailto:Jon@MetroEastCRE.com)  
Web [www.MetroEastCRE.com](http://www.MetroEastCRE.com)

The information contained herein has been provided by the property owner or obtained from sources deemed reliable. Although the information is believed to be accurate, it is not guaranteed. The property is subject to price change, prior sale or lease and withdrawal from the market, without notice. Buyer is responsible to conduct its own due diligence, as this offering contains no representations or warranties.



# SUBLEASE AVAILABLE: Heartland Office Village

1970 Northwestern Ave | Stillwater, MN 55082



COMMERCIAL REAL ESTATE SERVICES

**Jon Whitcomb** Principal | Broker

1950 Northwestern Ave N #101  
Stillwater, MN 55082

Cell 651.351.5130  
Office 651.351.5005

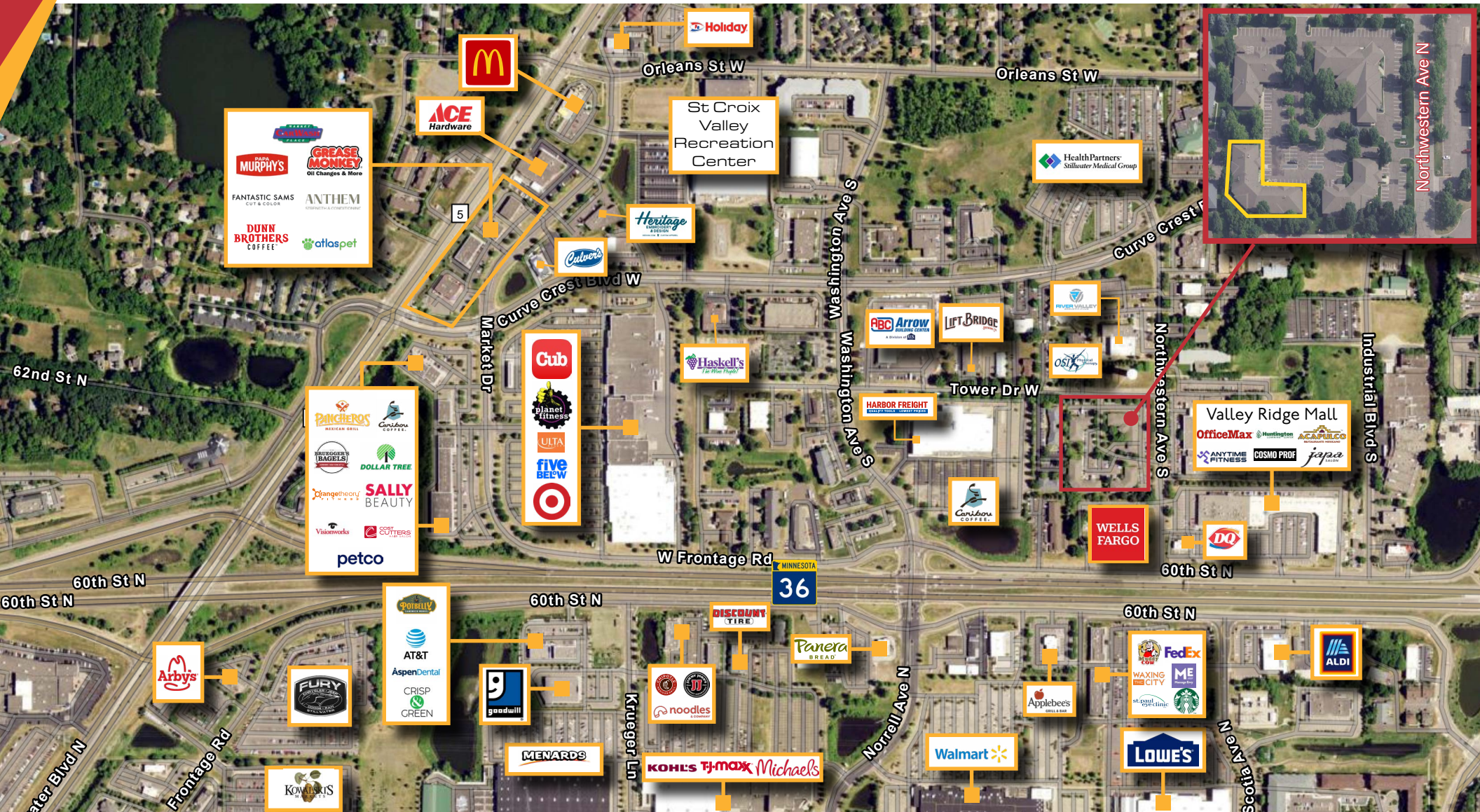
Email Jon@MetroEastCRE.com  
Web [www.MetroEastCRE.com](http://www.MetroEastCRE.com)

The information contained herein has been provided by the property owner or obtained from sources deemed reliable. Although the information is believed to be accurate, it is not guaranteed. The property is subject to price change, prior sale or lease and withdrawal from the market, without notice. Buyer is responsible to conduct its own due diligence, as this offering contains no representations or warranties.



# SUBLEASE AVAILABLE: Heartland Office Village

1970 Northwestern Ave | Stillwater, MN 55082



**Jon Whitcomb** Principal | Broker

1950 Northwestern Ave N #101  
Stillwater, MN 55082

Cell 651.351.5130  
Office 651.351.5005

Email [Jon@MetroEastCRE.com](mailto:Jon@MetroEastCRE.com)  
Web [www.MetroEastCRE.com](http://www.MetroEastCRE.com)

The information contained herein has been provided by the property owner or obtained from sources deemed reliable. Although the information is believed to be accurate, it is not guaranteed. The property is subject to price change, prior sale or lease and withdrawal from the market, without notice. Buyer is responsible to conduct its own due diligence, as this offering contains no representations or warranties.



COMMERCIAL REAL ESTATE SERVICES