

For Sale: 1.26 Acres of Commercial Land

10368 Liberty Ln | Chisago City, MN 55013

10368 Liberty Lane offers two parcels available for sale. Located in the heart of Chisago City, these parcels feature easy access to Hwy 8, Hwy 61 and I-35.

Property Information

Total Available: 1.26 Acres (54,885 SF)

Available Parcel IDs: 13.00019.45: 0.82 Acres
13.00019.42: 0.44 Acres

Asking Rate: ~~\$109,000~~ **\$75,000**

Zoning: Mixed Use - Industrial
[Click Here for detailed Information](#)

Utilities: Water and Sewer lines are located at the street level
[Click Here for Interactive Map](#)



The information contained herein has been provided by the property owner or obtained from sources deemed reliable. Although the information is believed to be accurate, it is not guaranteed. The property is subject to price change, prior sale or lease and withdrawal from the market, without notice. Buyer is responsible to conduct its own due diligence, as this offering contains no representations or warranties.

Jon Whitcomb Principal | Broker

1950 Northwestern Ave N #101
Stillwater, MN 55082

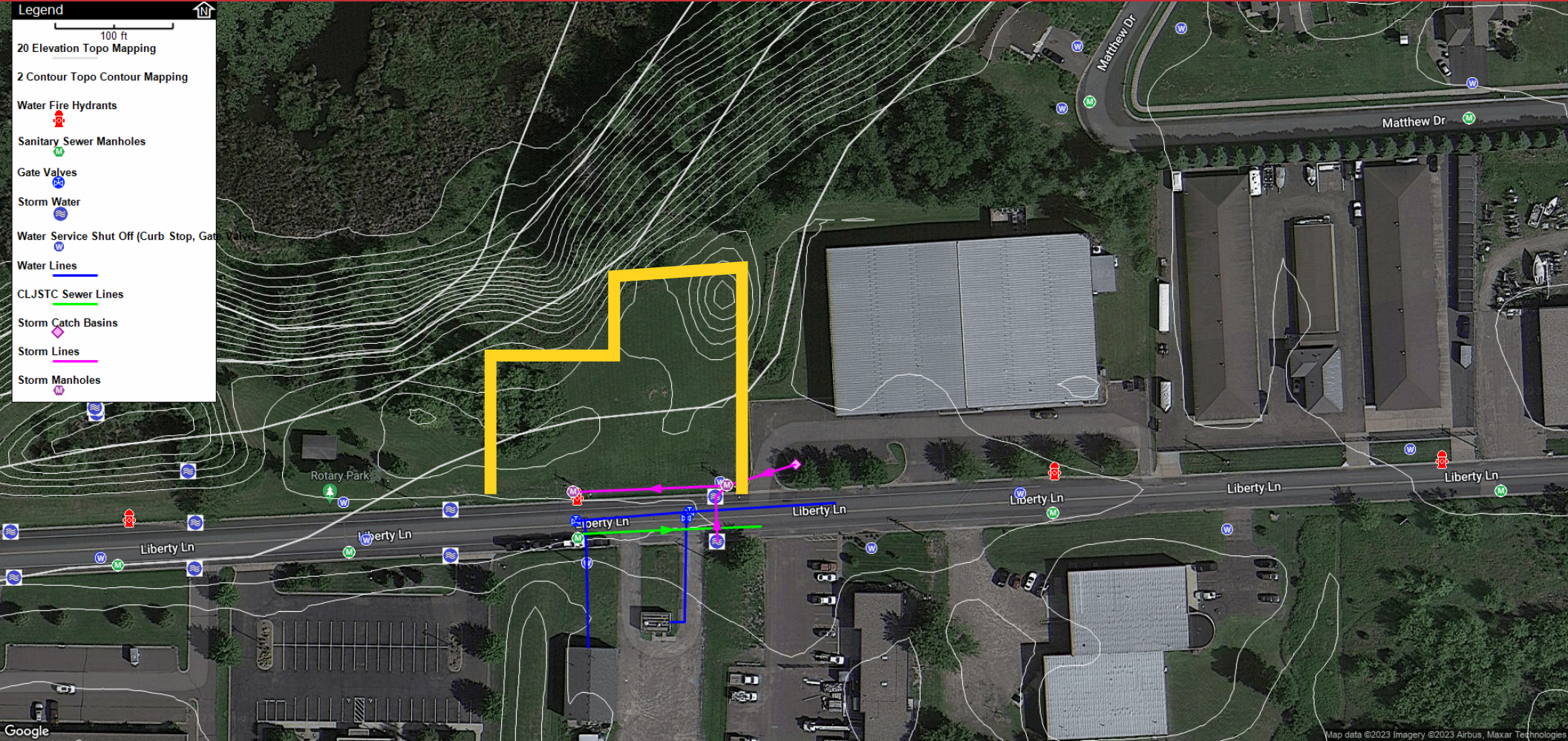
Cell 651.283.4884
Office 651.351.5005

Email Jon@MetroEastCRE.com
Web www.MetroEastCRE.com

For Sale: 1.26 Acres of Commercial Land

10368 Liberty Ln | Chisago City, MN 55013

Site Utilities > [Click Here for Interactive Map](#)



The information contained herein has been provided by the property owner or obtained from sources deemed reliable. Although the information is believed to be accurate, it is not guaranteed. The property is subject to price change, prior sale or lease and withdrawal from the market, without notice. Buyer is responsible to conduct its own due diligence, as this offering contains no representations or warranties.

Jon Whitcomb Principal | Broker

1950 Northwestern Ave N #101
Stillwater, MN 55082

Cell 651.283.4884
Office 651.351.5005

Email Jon@MetroEastCRE.com
Web www.MetroEastCRE.com

For Sale: 1.26 Acres of Commercial Land

10368 Liberty Ln | Chisago City, MN 55013



Drive Times

1

1 Minute
to Hwy 8

10

10 Minutes
to Hwy 61

12

12 Minutes
to I-35

15

15 Minutes
to Hwy 95



COMMERCIAL REAL ESTATE SERVICES

The information contained herein has been provided by the property owner or obtained from sources deemed reliable. Although the information is believed to be accurate, it is not guaranteed. The property is subject to price change, prior sale or lease and withdrawal from the market, without notice. Buyer is responsible to conduct its own due diligence, as this offering contains no representations or warranties.

Jon Whitcomb *Principal | Broker*

1950 Northwestern Ave N #101
Stillwater, MN 55082

Cell 651.283.4884
Office 651.351.5005

Email Jon@MetroEastCRE.com
Web www.MetroEastCRE.com

For Sale: 1.26 Acres of Commercial Land

10368 Liberty Ln | Chisago City, MN 55013

Hwy 8 Access



COMMERCIAL REAL ESTATE SERVICES

The information contained herein has been provided by the property owner or obtained from sources deemed reliable. Although the information is believed to be accurate, it is not guaranteed. The property is subject to price change, prior sale or lease and withdrawal from the market, without notice. Buyer is responsible to conduct its own due diligence, as this offering contains no representations or warranties.

Jon Whitcomb Principal | Broker

1950 Northwestern Ave N #101
Stillwater, MN 55082

Cell 651.283.4884
Office 651.351.5005

Email Jon@MetroEastCRE.com
Web www.MetroEastCRE.com